



PROJECT BACKGROUND

CAMBODIA

柬埔寨





Resources to Cashflow (Cambodia)

EXPLORING RESOURCES



COAL 40 MILLION TON
10% Area Drilled
Next to Road No 4
80km from Phnom Penh

50km from Railway

PROVEN PROCESS



Coal-to-UREA
尿素
1.2m ton in phases

Coal-to-Gas 煤制天然气
Mine Mouth Power 坑口电站

CONFIRMED DEMAND



Replaced Import
Export Markets
500K ton imported 2016

80km
Phnom Penh 金边



PROJECT BACKGROUND

- Project is partnership between Poh Group Singapore and Royal Group Cambodia 新加坡傅氏集团和柬埔寨皇家集团合资
- Royal Group is shareholders in ANZ Bank, Cellcard telecommunication company, Hydro-power plant etc 皇家集团是柬埔寨奥纽银行，通讯电话公司，水力发电公司等股东
- Cambodia import 500,000 ton of UREA a year 柬埔寨每年进口50万吨尿素



PROJECT BACKGROUND

- only 80km from Phnom Penh 煤矿离金边大约80公里
- Along National Highway No 4 国道4号边
- 70km to Railway 离铁路大约70公里
- Basin structure 盆地型矿区
- Good drill holes results 钻探结果很好
- Estimated 60m ton for drilled area of 20km²
20平方公里预测煤储备已经有6千万吨
- Total area 400km² 矿区400平方公里
- Potential resource can potentially reach 200m ton
潜在煤储备可能超过2亿万吨
- Good coal quality 3,500 kcal to 5,000 kcal
煤质不错3千5百达卡到5千达卡

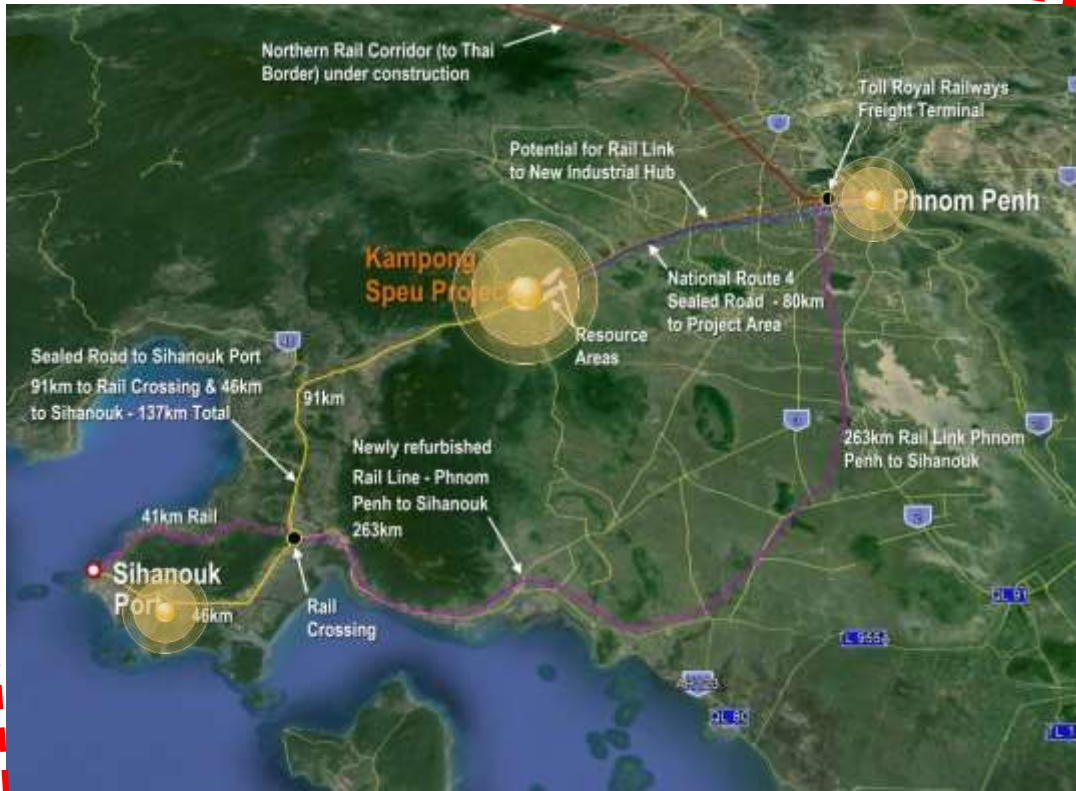


PROJECT BACKGROUND

- Project include Coal-to-Gas and Coal-to-UREA 项目包括煤制天然气，煤制尿素
- Coal-to-Gas if to supply Phnom Penh city with natural gas for domestic market 气化金边市场
- Coal-to-UREA is to replace import and generate export market to Thailand, Vietnam, Myanmar and Laos 尿素取代进口后，出口泰国，越南，缅甸和老挝
- Completed a feasibility study for Coal to UREA project using Indonesia coal for 1.2m ton annual capacity 完成了印尼进口煤制尿素可行性研究
- Continuing with exploration program to secure mining license for extraction 继续钻探工作至采矿权



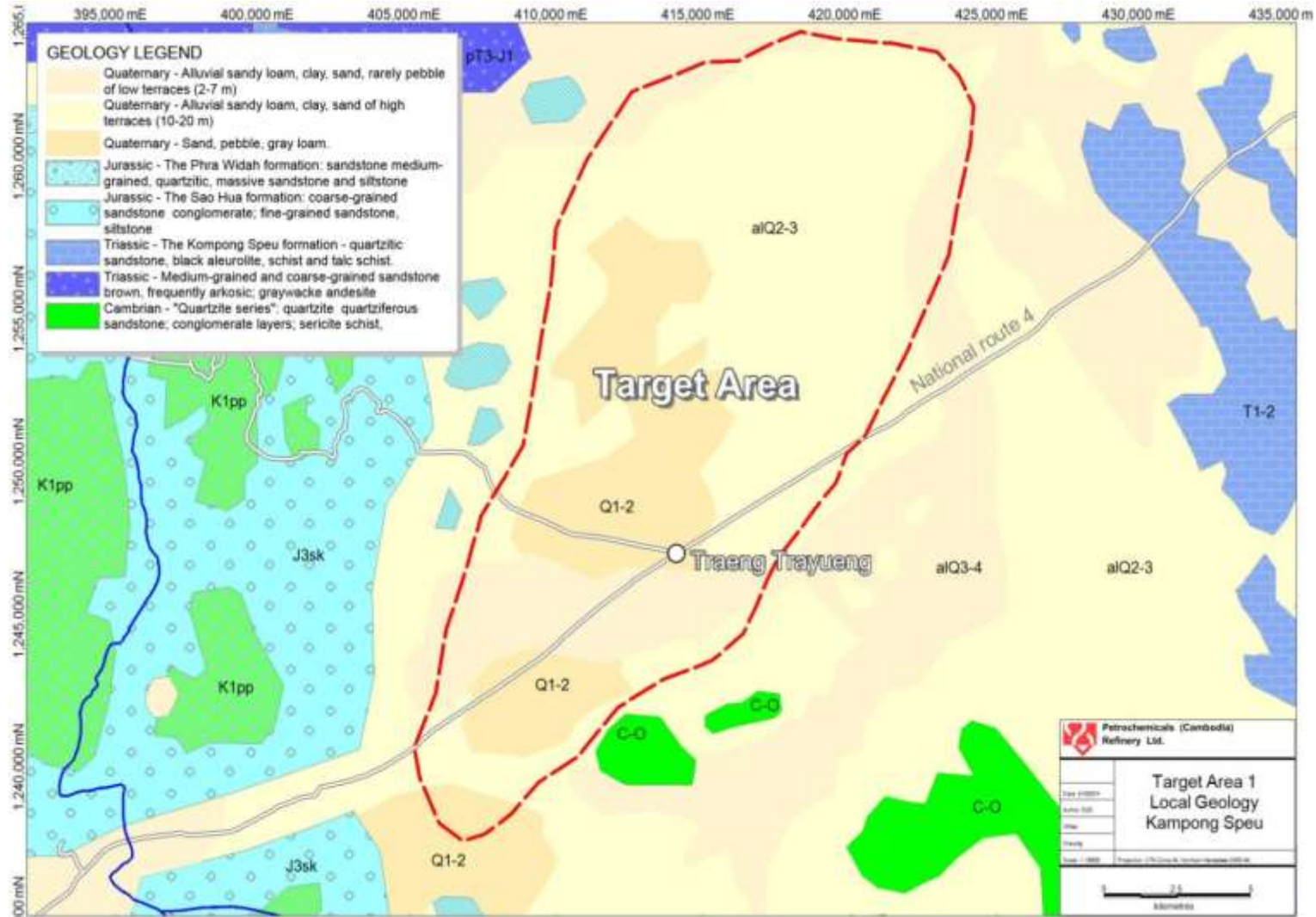
Kampong Speu Cambodia



- 80km West of Phnom Penh 离金边80公里
- Along National Highway (Route 4) 国道边
- 70km to Railway 铁路
- HV power lines (115kVA) 高压电缆
- access to water 不缺水



EXPLORATION PLAN 探矿计划



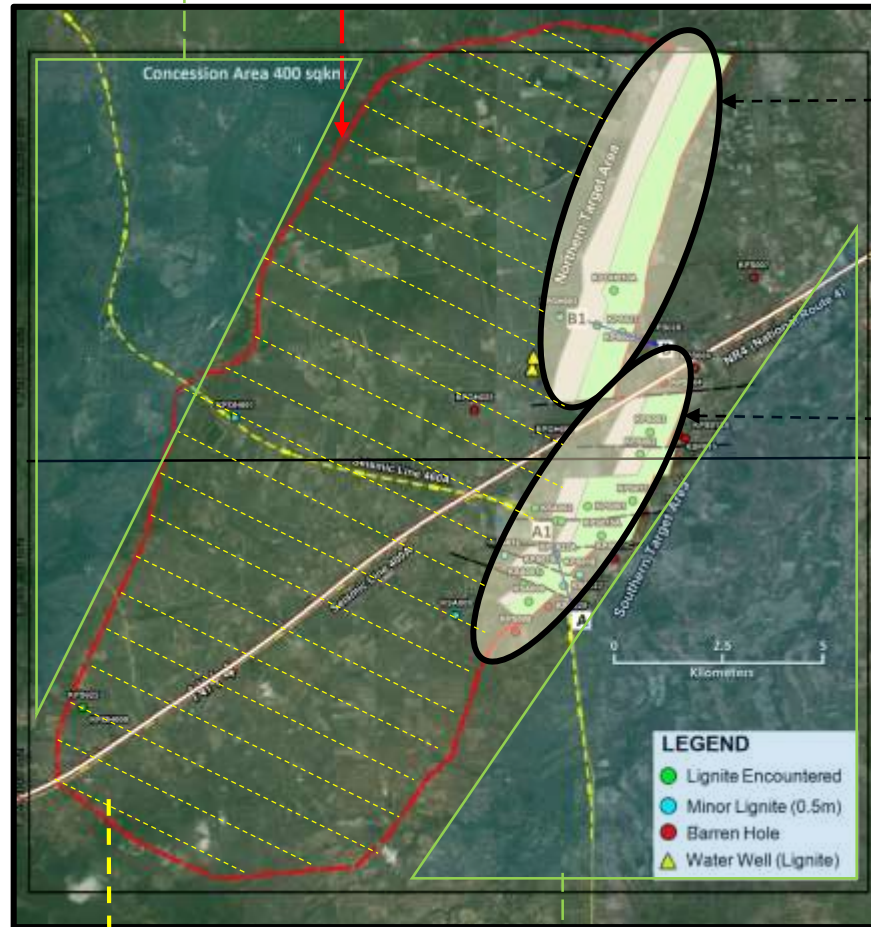
Surface Geology of the Kampong Speu Target Area (Russian Interpretation 1990)



EXPLORATION PLAN 探矿计划

No Coal Potential

Estimation of Coal Basin Border Area 17,000Ha



License #1
200km²
(20,000Ha)

License #2
200km²
(20,000Ha)

Upside Potential for Coal
Resource 15,800Ha

No Coal Potential

Area Explored

Combined Area ~1,200Ha

Resource Est. 100,000,000 ton

- 39 cored + 25 holes and 8 open holes
- 2,734 + 2,200 metres of drilling
- 61 + 60 samples analysed for coal quality with 6 + 40 samples sent to lab in New Zealand & China
- 22 +40 samples sent for Detailed Characterisation and quality analysis

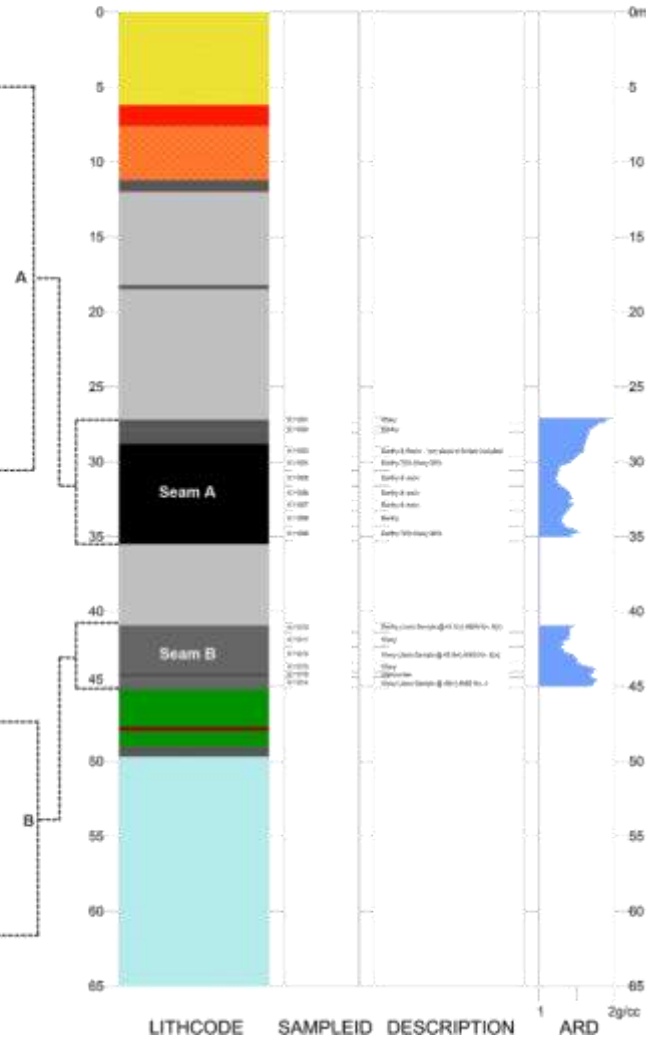
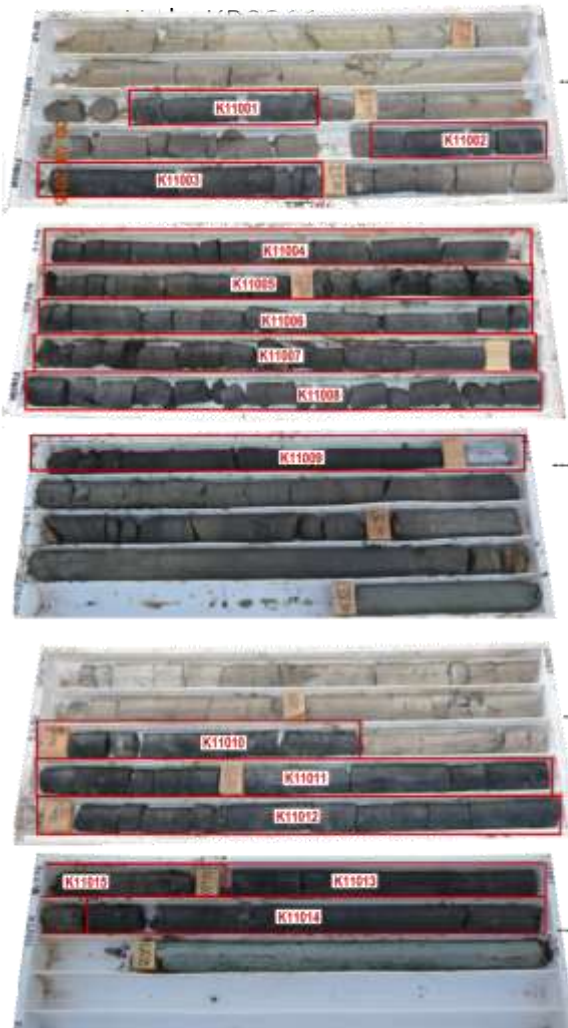
Key Statistics

- Licensed Area by Government: 40,000Ha
- Potential Coal Basin: 17,000Ha (red area)
- Area Explored: 1,200Ha (shaded area)
- Coal Potential for Area Explored: 100,000,000 t
- Upside Potential for additional Coal: 15,800Ha (yellow)
- Area with no Potential for Coal within the License Area: 23,000Ha (light blue area)



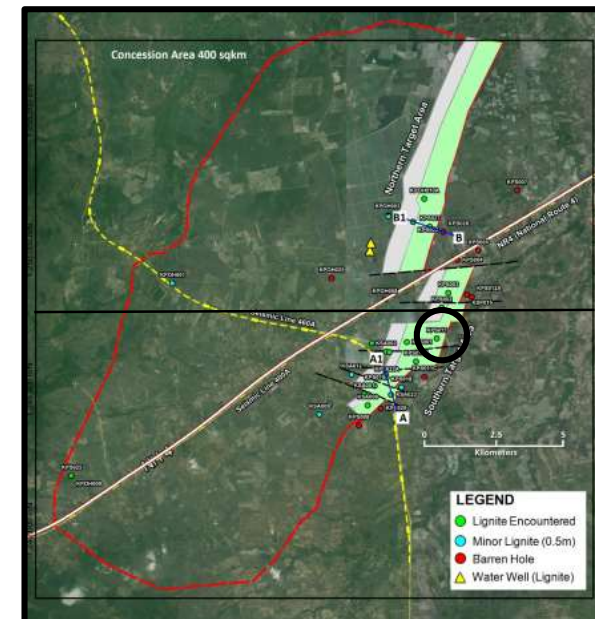
EXPLORATION RESULTS

Graphic Log & Sample Intervals KPS011



Lithology Legend

- XCB - Carbonaceous Clay
- LIG - Lignite
- CSG - Clay & Silt Grey
- XSB - Carbonaceous Silt
- MGG - Clay Green in Colour, Plastic, Smooth
- VRC - Varve Like Banding Clay / Carb Laminations
- MCW - Clay/Silt, Light Grey, Poss Marine? +/-Pyrite Occurs Below Lignite
- QSC - Aluvial Sand, unconsolidated (Recent Cover)
- SSR - Sand & Silt Red Brown in colour - Terrestrial
- CTR - Clay/Silt/Sand - Red/Orange/ Grey in Colour, Mottled - Terrestrial





EXPLORATION ACTIVITIES



First-level coordinate correction



Field study



UXO clearance in the work area



Safety training



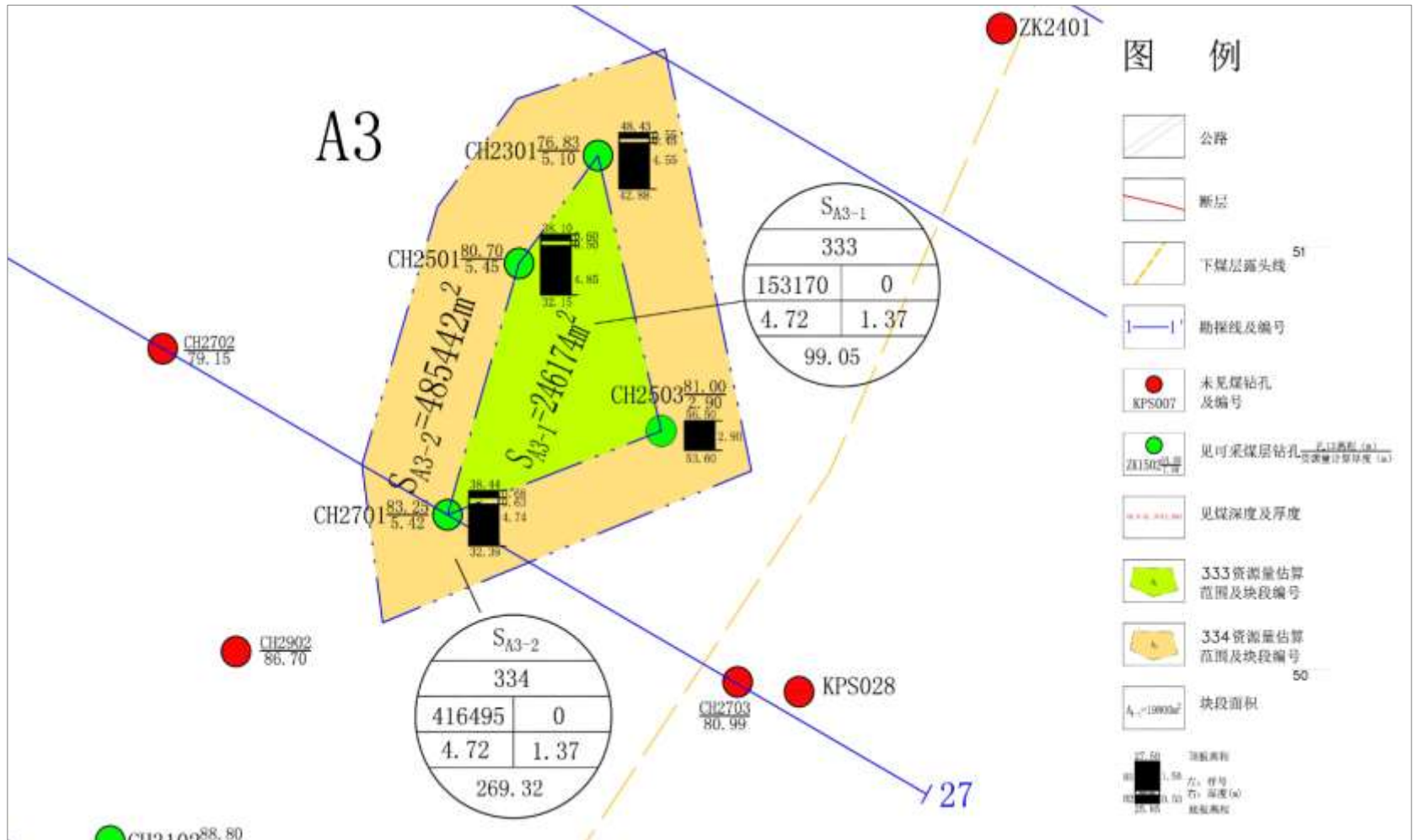
Drilling core



Hole sealing mark



Example of polygonal estimation



Example of polygonal estimation – Kampong Speu



Example of polygonal estimation

