



PROJECT BACKGROUND

RUSSIA

俄罗斯





Russia Far East Gas Field

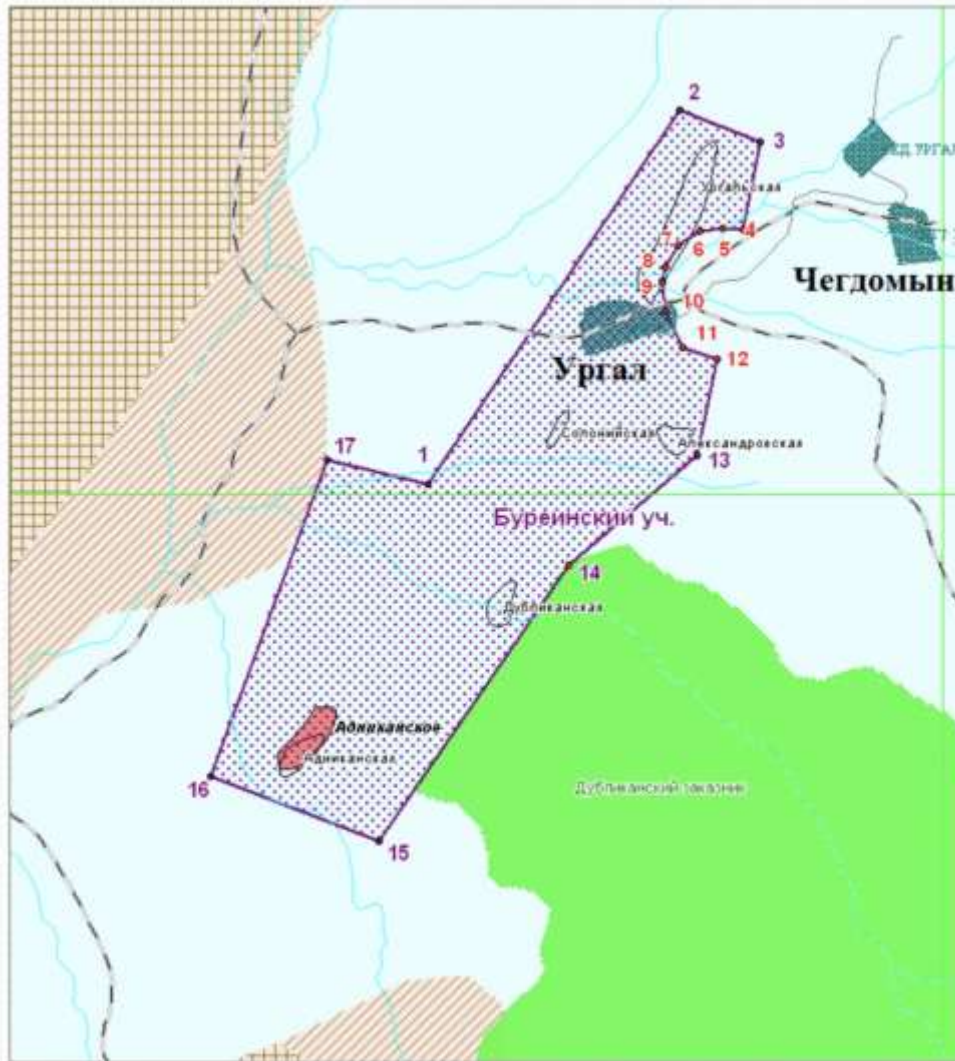
俄罗斯远东天然气田

- **2 billion m³ C1+C2 natural gas reserve**
20亿立方米C1+C2储备
- **4 billion m³ D1 reserve**
40亿立方米D1 储备



Resource base of Bureinsky subsurface site

- Site area – 403.2 sq.km
- Bureinsky subsurface site is located on the territory of Verknebureinsky district of the Khabarovsk territory
- 5 analogous structures were revealed (Adnikanskaya, Aleksandrovskaya, Dublikanskaya, Soloniyskaya and Urgalskaya)
- While drilling structure wells, oil and gas seepages were found
- Formation depth is located at the level from 300 to 1200 m, that therefore presupposes cost effective expenditure of new field development drilling





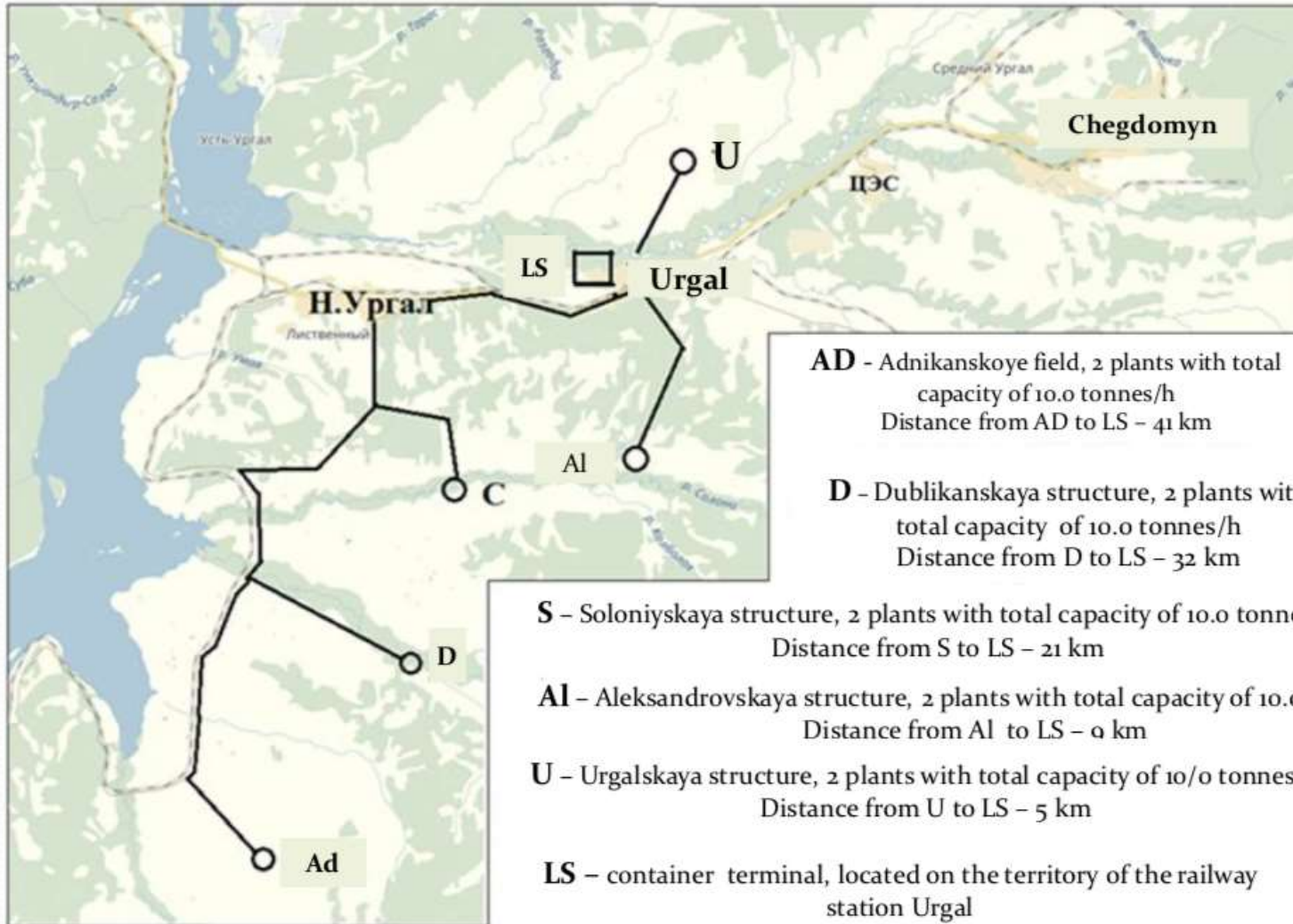
RUSSIA PROJECT BACKGROUND

Gas chemical composition of the Adnikansky field:

- Methane – 79,2 %
 - Ethane – 1,3 %
 - Propane – 0,2 %
 - Butane – 0,1 %
 - Nitrogen – 5,1 %
 - CO₂ – 14,1 %
-
- Flow rate – 120,000 nm³ per day
 - Pressure – 110 atm.
 - Gas temp – +24°C



Scheme of LNG plants location in Verkhnebureinsky district.





RUSSIA PROJECT BACKGROUND

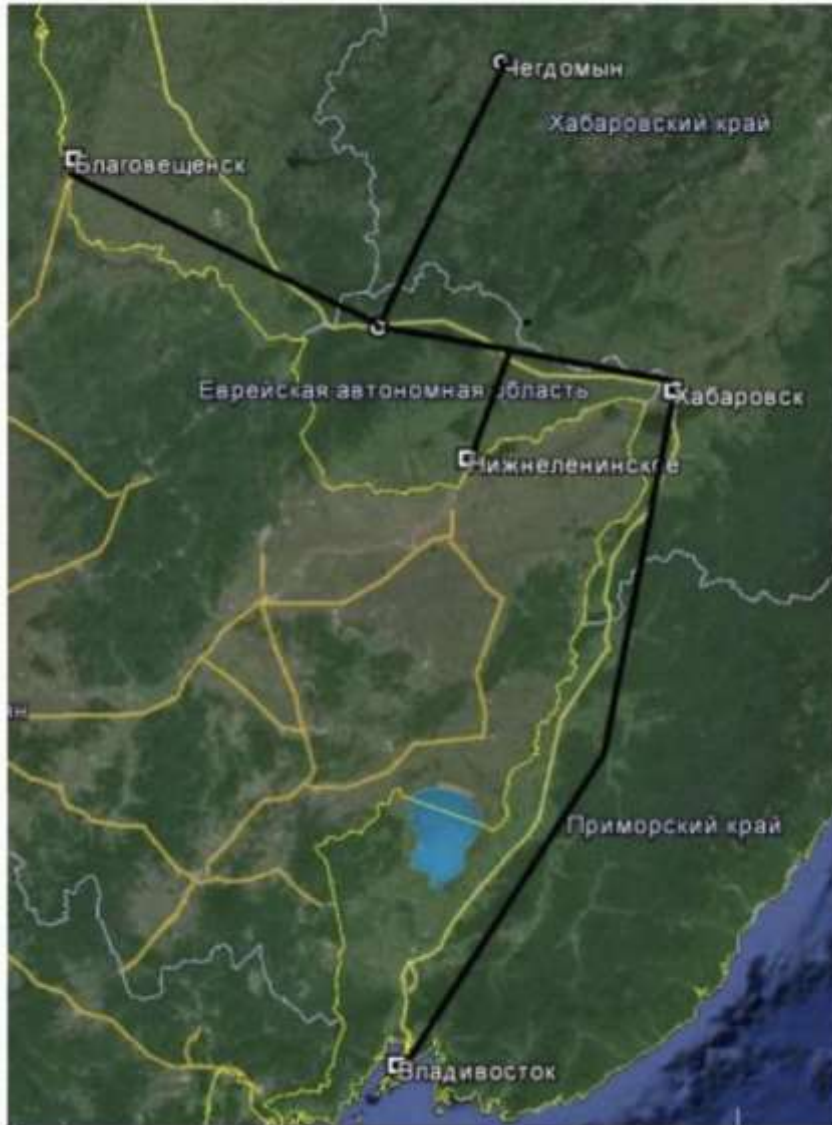
Liquefaction

- Phase 1 – 6 ton/hour, 50,000 ton/year
- Phase 2 – 24 ton/hour, 200,000 ton/year
- Phase 3 – 30 ton/hour, 250,000 ton/year





RUSSIA PROJECT BACKGROUND



Routes of LNG delivery

Route 1

- Departure station Chegdomyn Arrival station Nizhneleninskoye – Tuntzyan town (new bridge)
- Distance – 612 km

Route 2

- Departure station Chegdomyn Arrival station Blagoveshchensk city
- Distance – 853 km

Route 3

- Departure station Chegdomyn Arrival station Vladivostok
- Distance – 1537 km

Route 4

- Departure station Chegdomyn to UlaaBaatar Station to China Erlian Station
- Distance – 2,400 km + 600 km